

NOTE:  
THIS DRAWING HAS BEEN PRODUCED BY ELECTRONIC MEANS.

SHOULD THE SCALE MEASUREMENTS BE TAKEN BY MEANS OTHER THAN ELECTRONIC (e.g. FROM A PRINTED COPY), THE FOLLOWING MUST BE TAKEN INTO CONSIDERATION BEFORE SCALING IS UNDERTAKEN:

1. ENSURE THAT THE COPY HAS BEEN PRINTED/PLOTTED ON THE STATED SHEET SIZE WITH THE PLOTTING SCALE SET TO A CORRECT RATIO
2. ENSURE THAT AN ADEQUATE ALLOWANCE (DEPENDANT ON THE STATED SCALE) IS MADE FOR THE INEVITABLE DISTORTIONS INTRODUCED BY PLOTTING/PRINTING AND COPYING PROCESSES
3. MARKED CRITICAL DIMENSIONS ARE TO BE REGARDED AS HAVING PRECEDENCE OVER THE SCALED VALUES
4. WINDOWS SHOWN ON PLAN ARE INDICATIVE ONLY
5. UPPER FLOOR CASEMENT WINDOWS HAVE RESTRICTORS AND REVERSIBLE CHILDPROOF HINGES
6. HARD WIRED SMOKE ALARM ON EVERY FLOOR

## HQI Score

Homes and Communities Agency

NAHP programme

Unit Size 60%  
Unit Layout 63%

HC Design and Quality Standards  
(April 2007)

P7	Final Issue	22.07.09	JM
P6	Housing Corporation issue	12.06.09	CH
P5	Preliminary issue to client	22.12.08	CH
P4	Housing Corporation amendments	13.11.08	CH
P3	Notes 5 & 6 added, HQI score updated	04.08.08	CH
P2	Unit HQI Score Added	30.07.08	PB
P1	Preliminary Issue	27.06.08	CH

REV	DESCRIPTION	DATE	INT	CHKD
STATUS Information				

**calfordseaden**  
construction & property consultants

Client  
**Galliford Ty**

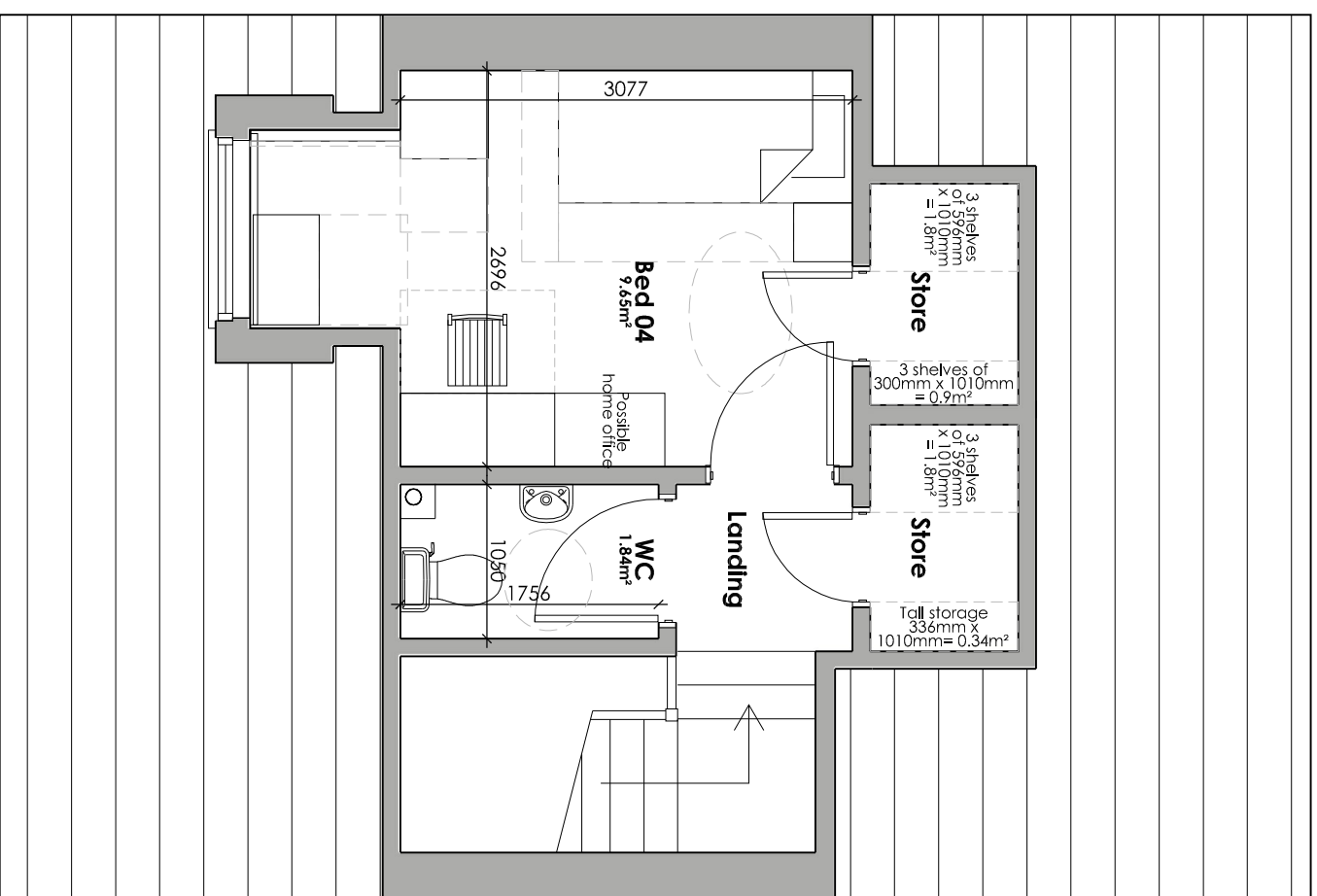
Project  
**Template Housing Layouts**

Title  
**House Type 6 - 4 Bed 6 Person  
Second Floor Plan (2.5 storey)**

Scale 1:50 @A3 Date Jun 08 Drawn CH Checked KR

Project No.: S080065 Drawing No. 17 Revision P7

Calford House, Wessex Business Park, Wessex Way  
Colden Common, Winchester, Hampshire SO21 1WP  
T 01962 718300 F 01962 718350  
E winchester@calfordseaden.co.uk W www.calfordseaden.co.uk  
calfordseaden LLP is a Limited Liability Partnership Registered in England & Wales no. OC315838  
Registered office: Devonshire House, 60 Goswell Road, London EC1M 7AD



Second Floor