

NOTE:
THIS DRAWING HAS BEEN PRODUCED BY ELECTRONIC MEANS.

SHOULD THE SCALE MEASUREMENTS BE TAKEN BY MEANS OTHER THAN ELECTRONIC (e.g. FROM A PRINTED COPY), THE FOLLOWING MUST BE TAKEN INTO CONSIDERATION BEFORE SCALING IS UNDERTAKEN:

1. ENSURE THAT THE COPY HAS BEEN PRINTED/PLOTTED ON THE STATED SHEET SIZE WITH THE PLOTTING SCALE SET TO A CORRECT RATIO
2. ENSURE THAT AN ADEQUATE ALLOWANCE (DEPENDANT ON THE STATED SCALE) IS MADE FOR THE INEVITABLE DISTORTIONS INTRODUCED BY PLOTTING/PRINTING AND COPYING PROCESSES
3. MARKED CRITICAL DIMENSIONS ARE TO BE REGARDED AS HAVING PRECEDENCE OVER THE SCALED VALUES
4. WINDOWS SHOWN ON PLAN ARE INDICATIVE ONLY
5. UPPER FLOOR CASEMENT WINDOWS HAVE RESTRICTORS AND REVERSIBLE CHILDPROOF HINGES
6. HARD WIRED SMOKE ALARM ON EVERY FLOOR

HQI Score

Homes and Communities Agency
NAHP programme
HC Design and Quality Standards
(April 2007)

Unit Size 60%
Unit Layout 61%

P7	Final Issue	22.07.09	JM
P6	Housing Corporation issue	12.06.09	CH
P5	Preliminary issue to client	22.12.08	CH
P4	Housing Corporation amendments	13.11.08	CH
P3	Notes 5 & 6 added, HQI score updated	04.08.08	CH
P2	Unit HQI Score Added	30.07.08	PB
P1	Preliminary Issue	27.06.08	CH

REV	DESCRIPTION	DATE	INT	CHKD
STATUS	Information			

calfordseaden
construction & property consultants

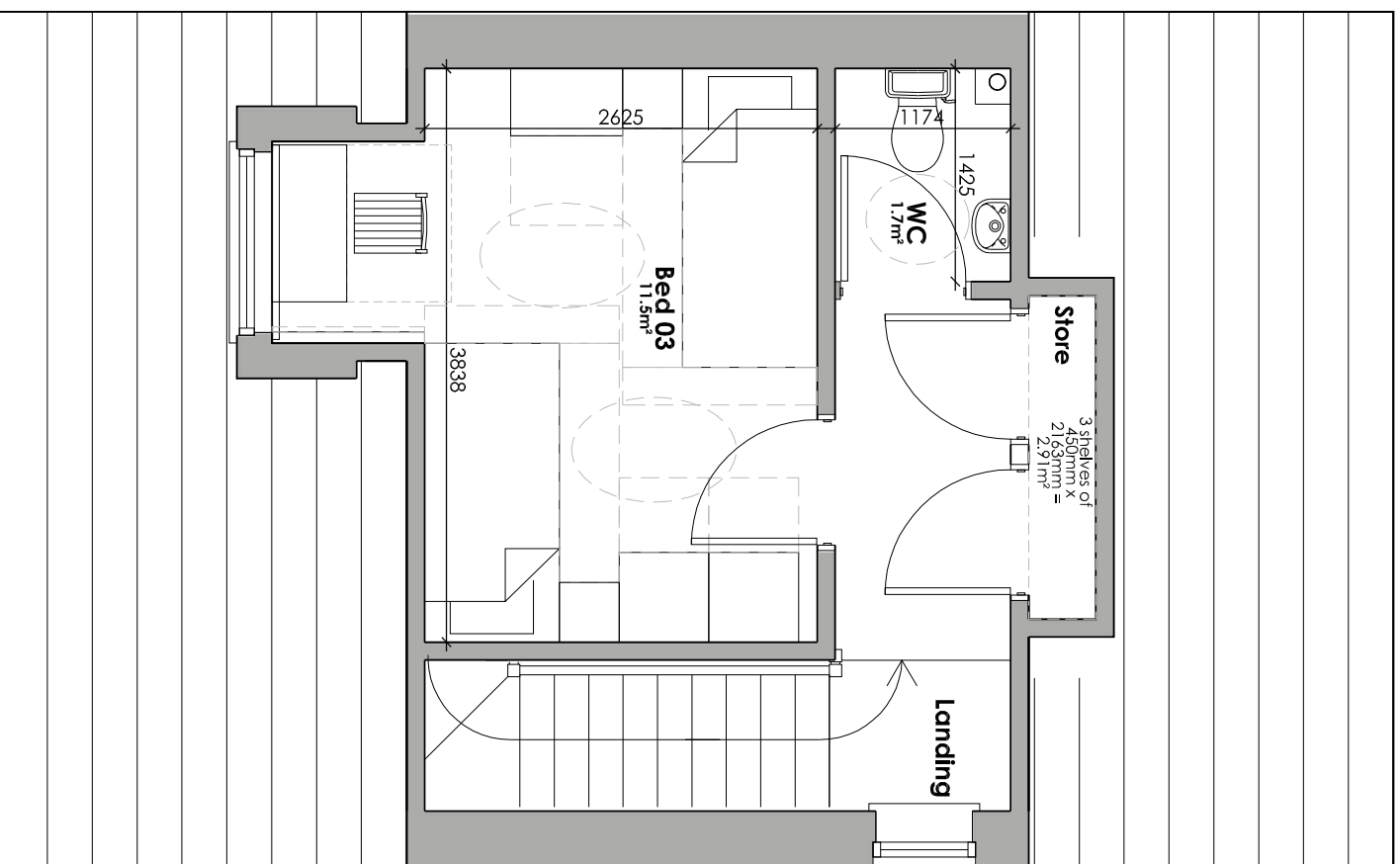
Client
Galliford Ty

Project
Template Housing Layouts

Title
**House Type 4 - 3 Bed 6 Person
Second Plans (2.5 storey)**

Scale	Date	Drawn	Checked
1:50 @A3	Jun 08	CH	KR
Project No.:	Drawing No.	Revision	
S080065	14	P7	

Calford House, Wessex Business Park, Wessex Way
Colden Common, Winchester, Hampshire SO21 1WP
T 01962 718300 F 01962 718350
E winchester@calfordseaden.co.uk W www.calfordseaden.co.uk
calfordseaden LLP is a Limited Liability Partnership Registered in England & Wales no. OC315838
Registered office: Devonshire House, 60 Goswell Road, London EC1M 7AD



Second Floor