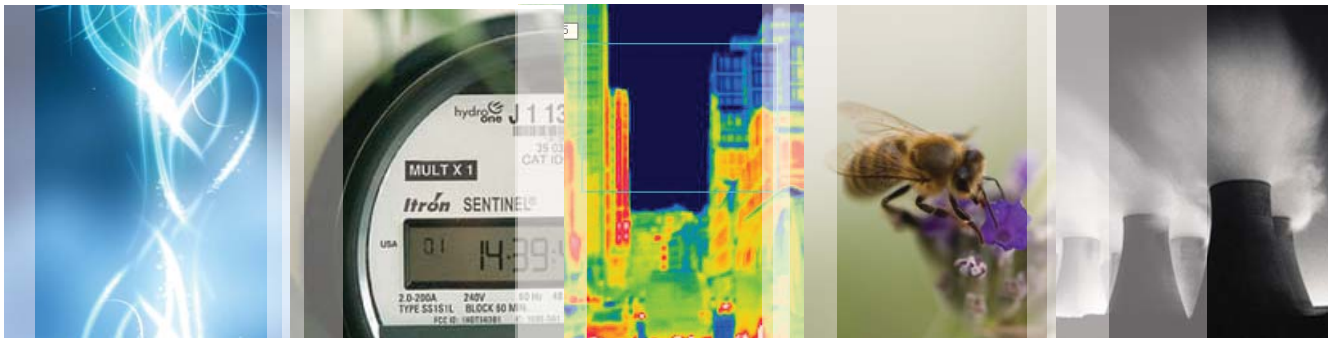


WHAT IS THE CRC ENERGY EFFICIENCY SCHEME (CRC)?



The CRC Energy Efficiency Scheme (formerly known as the Carbon Reduction Commitment) is the UK's mandatory climate change and energy saving scheme, due to start in April 2010. It is central to the UK's strategy for improving energy efficiency and reducing carbon dioxide (CO₂) emissions, as set out in the Climate Change Act 2008.

The scheme has been designed to raise awareness in large organisations, especially at senior level, and encourage changes in behaviour and infrastructure. The schemes amended title serves to better reflect the CRC's focus on increasing energy efficiency.

CRC is designed to improve energy efficiency in large organisations. It will operate as a 'cap and trade' mechanism, providing a financial incentive to reduce energy use by putting a price on carbon emissions from energy use. In CRC, organisations buy allowances equal to their annual emissions. The overall emissions reduction target is achieved by placing a 'cap' on the total allowances available to each group of CRC participants. Within that overall limit, individual organisations can determine the most cost-effective way to reduce their emissions. This could be through buying extra allowances or investing in ways to decrease the number of allowances they need to buy.

All the money raised through the allowances will be recycled back to participants, according to how well they perform. The scheme features an annual performance league table that ranks participants on energy efficiency performance. Together with the financial and reputation considerations, the scheme encourages organisations to develop energy management strategies that promote a better understanding of energy consumption. Organisations are eligible for CRC if they have at least one half-hourly electricity meter settled on the half-hourly market. They also qualify if their total half-hourly electricity consumption exceeded 6,000 megawatt-hours (approximately £500,000 electricity bill) during 2008.

Initially, it is estimated around 5,000 organisations will qualify, including supermarkets, water companies, banks, local authorities and all central Government Departments. Qualifying organisations will have to comply legally with the scheme or face financial and other penalties.

calfordseaden are able to assist with a range of services including assistance in setting up the CRC process, surveys, reports and recommendations for energy efficiency and CO₂ reductions. We are also able to assist with the on going advice and management process of the scheme.

For further information contact:

Terry Bartholomew DipSurv MRICS MAPM
Partner (**Orpington**)

T 01689 888222 E tbartholomew@calfordseaden.co.uk

Peter Gatfield BSc (Hons) MRICS
Associate (**London**)

T 020 7940 3200 E pgatfield@calfordseaden.co.uk

Ashley Harper BSc (Hons) MRICS
Partner (**Birmingham**)

T 0121 454 1688 E aharper@calfordseaden.co.uk

Stuart Hill BSc (Hons) MRICS FB Eng
Associate (**Winchester**)

T 01962 718300 E shill@calfordseaden.co.uk

www.calfordseaden.co.uk

HEAD OFFICE

St John's House, 1a Knoll Rise
Orpington Kent BR6 0JX

T 01689 888222
F 01689 888299
E orpington@calfordseaden.co.uk

King's Head House
King's Head Yard
Borough High Street
London SE1 1NA

T 020 7940 3200
F 020 7940 3299
E london@calfordseaden.co.uk

Stewart Court
214a Hagley Road, Edgbaston
Birmingham B16 9PH

T 0121 454 1688
F 0121 454 1700
E birmingham@calfordseaden.co.uk

Calford House
Wessex Business Park
Wessex Way
Colden Common
Winchester S021 1WP

T 01962 718300
F 01962 718350
E winchester@calfordseaden.co.uk

www.calfordseaden.co.uk

CHARTERED SURVEYING
PROJECT MANAGEMENT
ARCHITECTURE & MASTER PLANNING
CIVIL & STRUCTURAL ENGINEERING
MECHANICAL & ELECTRICAL ENGINEERING
SUSTAINABILITY ADVICE
HEALTH & SAFETY CONSULTANCY